

ZLP Electronics

Volume controls in Windows 7.

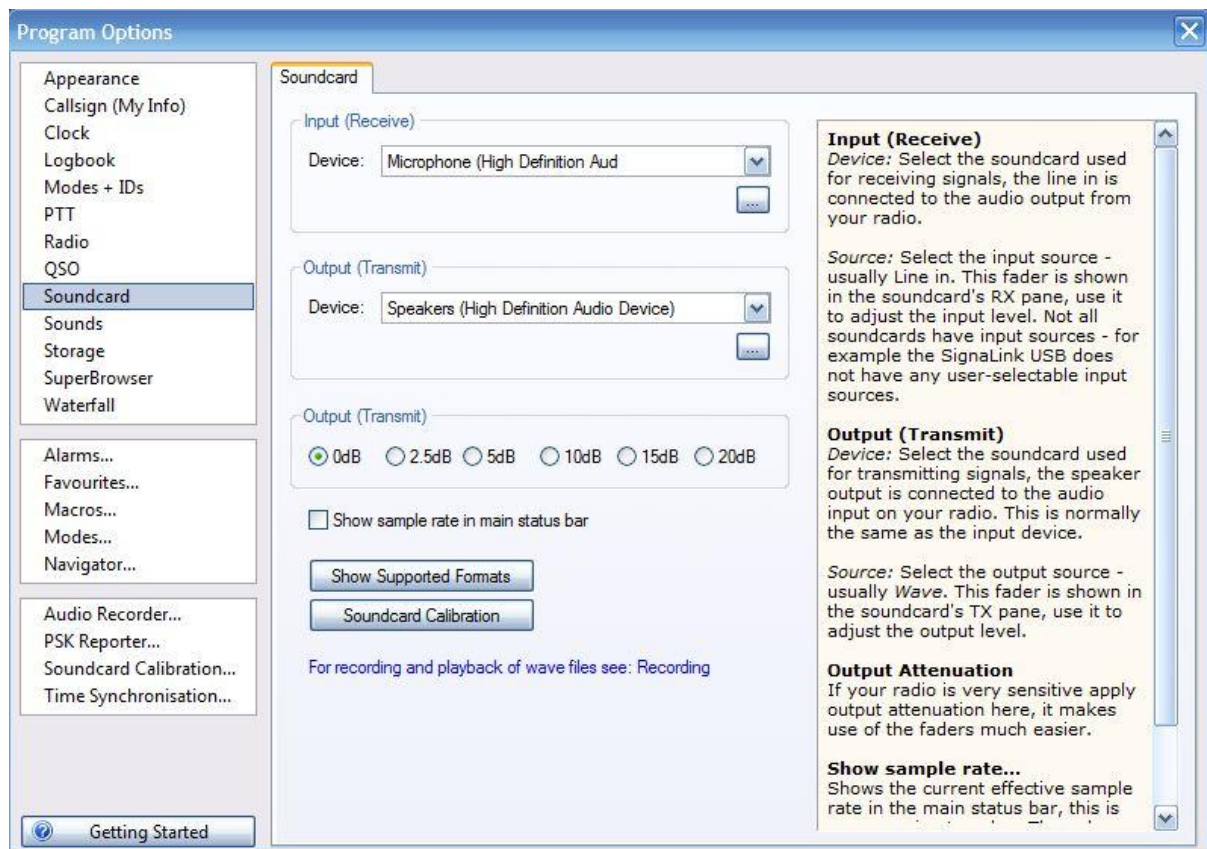
When using the DigiMaster MiniPRO you should adjust input and output levels using Windows Volume controls. This guide is for those users who don't know how to do it.

INPUT LEVELS

The screenshot displays the Digital Master 780 software interface. The main window title is "Digital Master 780 - [BPSK-31]". The menu bar includes File, Edit, View, QSO, Browser, Logbook, SSTV, SuperBrowser, World Map, Tools, Window, and Help. The toolbar contains icons for QSO, SuperBrowser, Radio, Soundcard, Waterfall, HRD, Logbook, Program Options, Full Screen, and a digital clock showing 09:30:29. The left sidebar has a "Default/Tags" section with fields for (F2) Start, (F3) End, (F5) Call, Name, QTH, Locator, Country, Frequency, Band, Mode, Sent, Rcvd, and Remark. Below these are "Add (F1)" and "Reset (F4)" buttons. The main text area shows a QSO log entry for BPSK-31 with the following text: "dtee_er .x ... de RA6AGP RA6AGP RA6Anete pse K i R7GL R7GL de YO3HNY ltt 3 CQ CQ CQ DE OH2MQ OH2MttHMQ CQ CQ CEtH2MQ OH2MQsCo 1S fK ? R7GL R7GL de YO3HFY YO3HFY YO3HNY ps OZ2ZJ de RA1QO 73 Boerge Winkler and thanks for this BPSK-31 QSO on 20m, good DX. OZ2ZJ de RA1QO sk". Below the text area is a control bar with buttons for "Send (F1)", "Auto (F2)", "Pause (F3)", "Stop (F4)", and "Repeat". The "Waterfall" display at the bottom shows a frequency spectrum from 100 to 2900 kHz. The status bar at the bottom indicates "Ready", "CPU: 1%", "Audio: 100%", and an "Overload" message.

Above is an example of the input signal being too high – (notice the "Overload" message). This doesn't normally cause any problems in decoding but how do you reduce the input level?

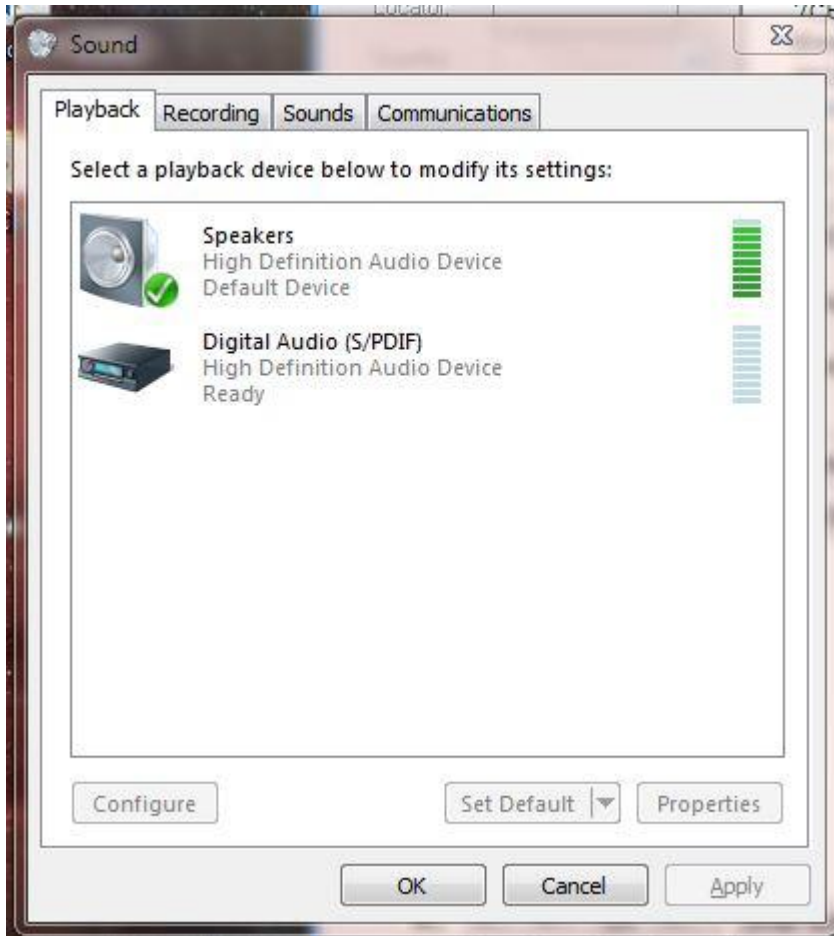
Press "F8" to open DM780 program options window (configuration) and select "Soundcard", the following window will open;



Ensure the device you are using for input appears in the tip select box "Input (Receive) box.

Click on the button underneath with the "... symbols.

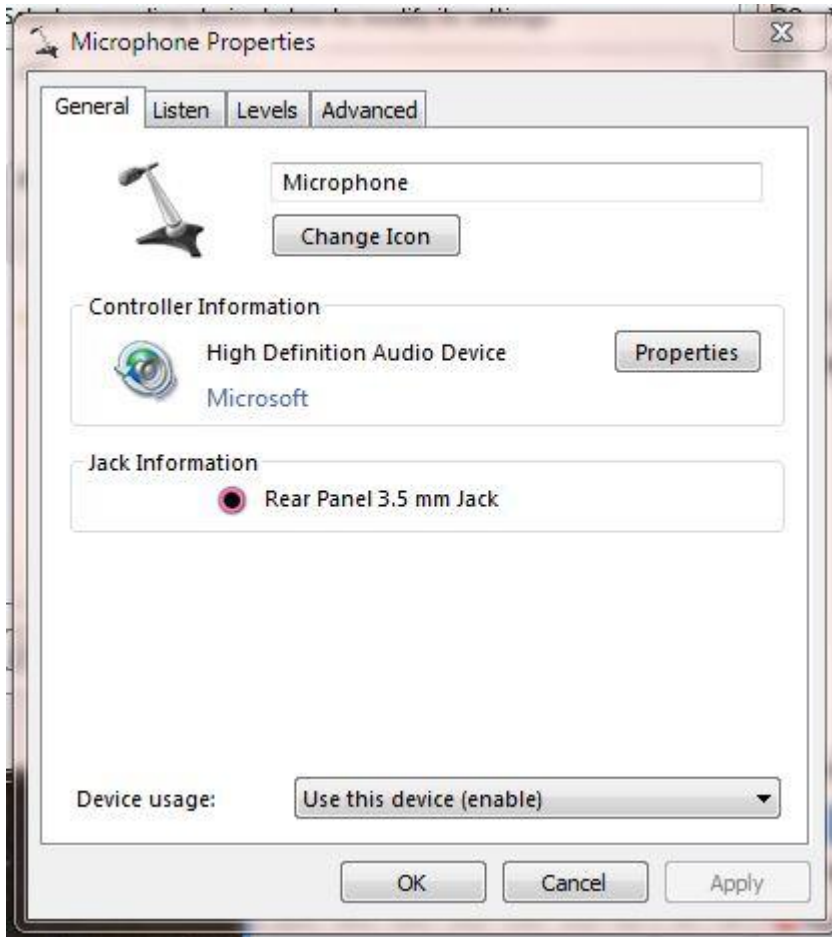
The following window will open;



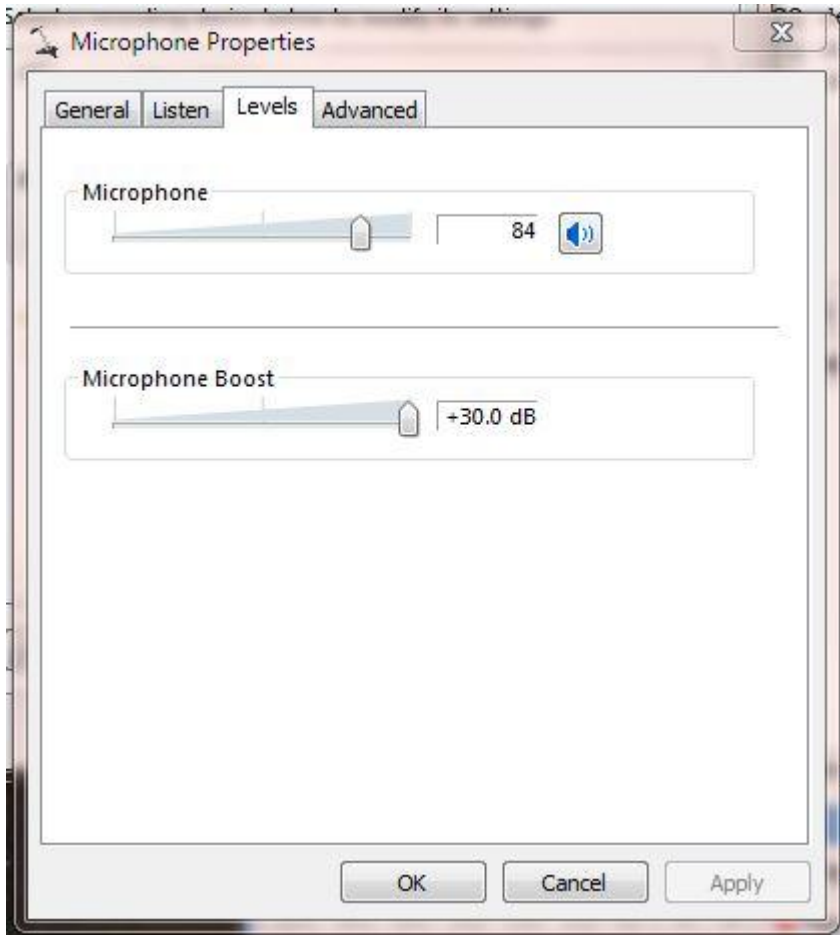
Select the tab "Recording" and the following window will appear;



In the above case you can see that the microphone is selected as the input source, you may have a different input selected such as line in, whichever input you are using, double click it. In this case I will use the mic input as an example and when double clicked the following window will open;



Now click on the "Levels" tab and the following window will open;

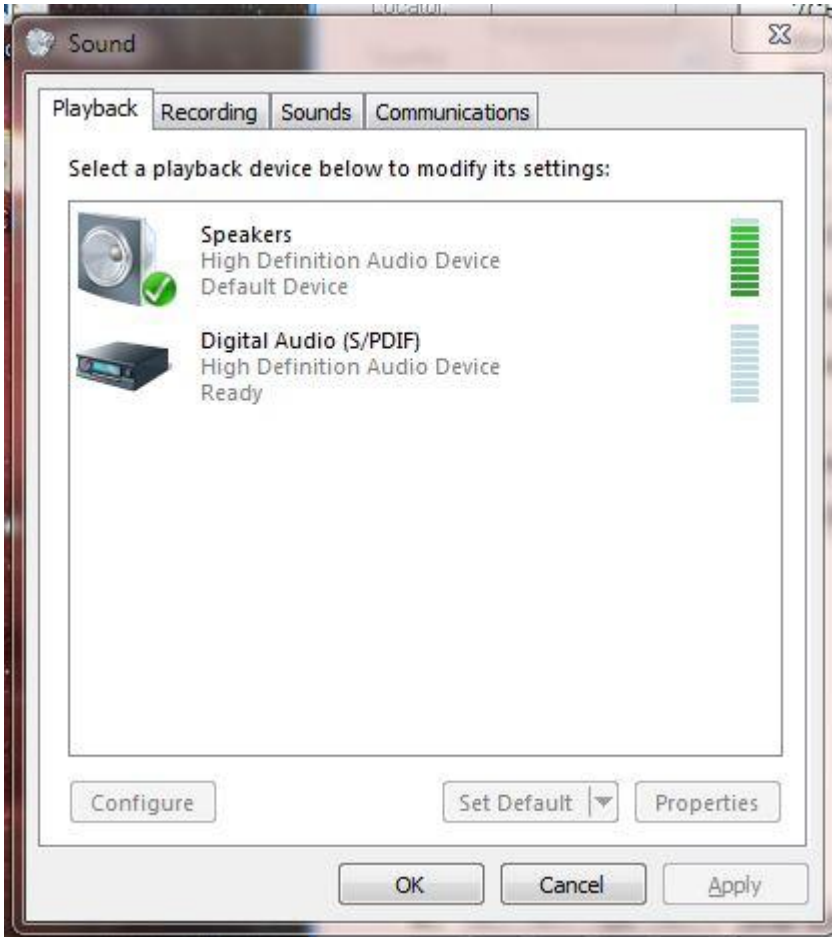


Simply adjust your input levels so that you get a reasonable input level.

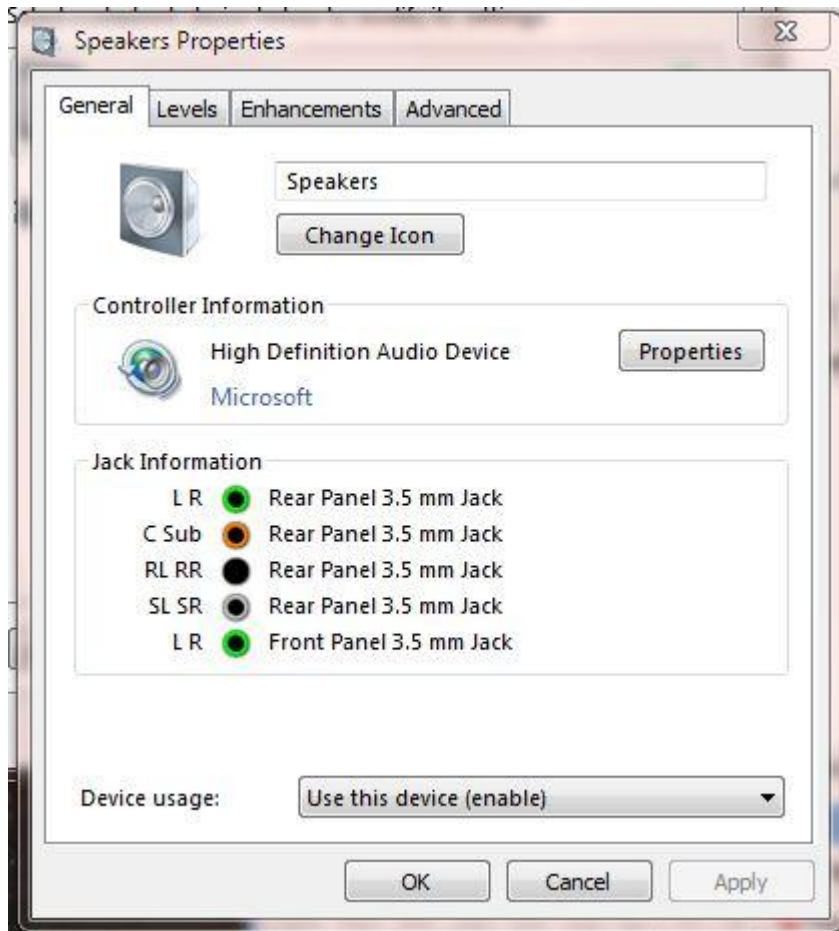
OUTPUT LEVELS

A similar procedure is used for controlling your output levels.

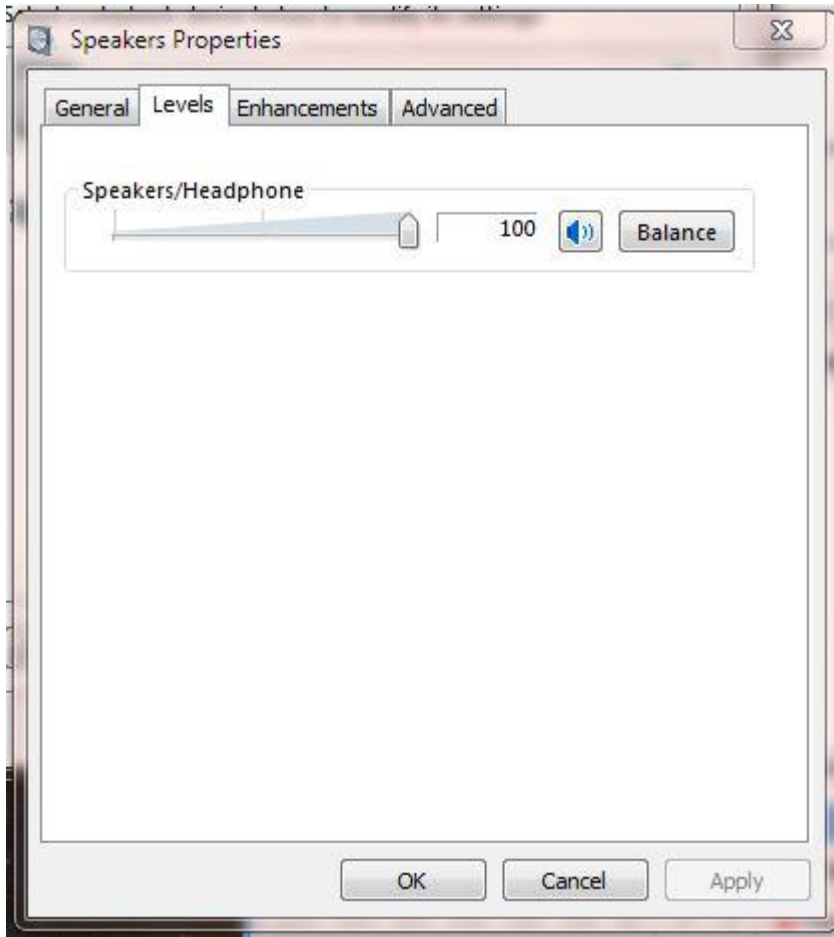
This time you select the device used output (Transmit) and again click the "..." button to get the following window;



Depending on your PC and your device selected for output you may have other options but for this example I will be using the "Speakers", so double click "Speakers" and the following window will open;

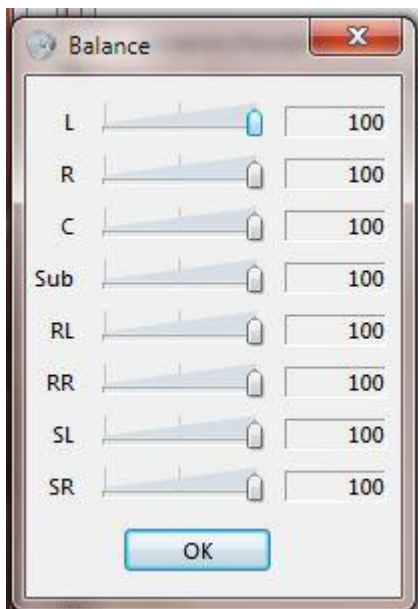


Select the "Levels" tab and the following window will appear;



Adjust your level to suit your setup.

While you are here you may as well check the "Balance", so click on the "Balance" button and the following window will appear (the actual appearance will depend on your pc and the hardware it has installed);



Balance is not centre as it would normally be displayed, instead it is simply shown as level left and level right, set them the same of course.

IN HRD;

You can also select the attenuation that can be applied to the output level, simply click on one of the radio buttons on the "Output" (Transmit) section of the program options -> Soundcard.

IN THE MINIPRO

The DigiMaster MiniPRO also has internal input and output level controls; (see MiniPRO instructions).

IN THE DIGIMASTER PRO

The DigiMaster PRO interfaces have external level controls.

IN YOUR RADIO

Many radios also have adjustable input and output level controls (often via the radios menu system).

In the case of the 857 for example, you have a menu option to control "Digital gain". (Affects drive of the radio).